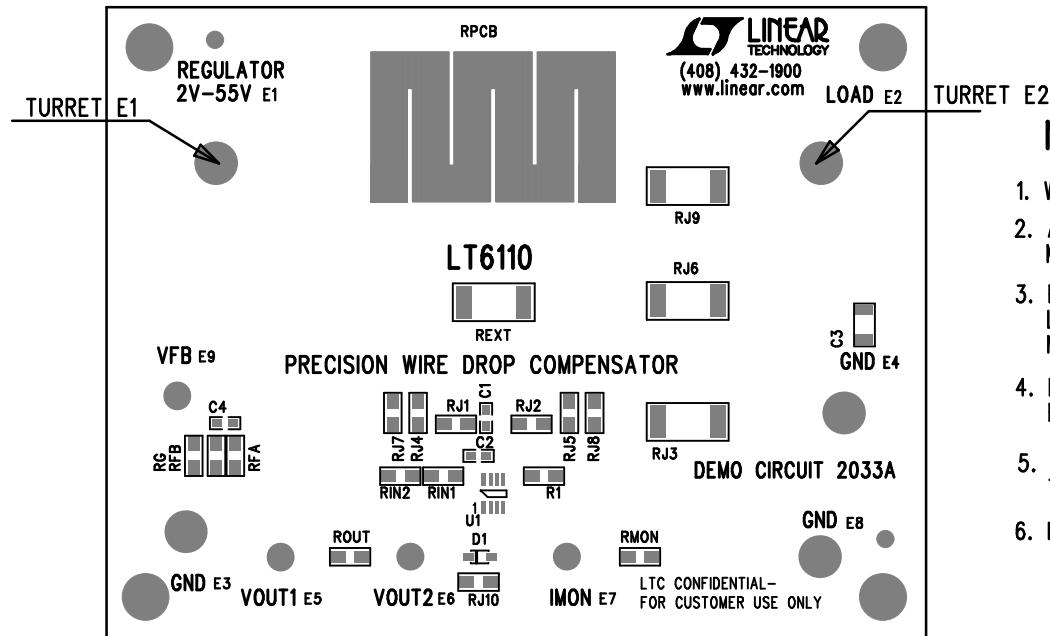
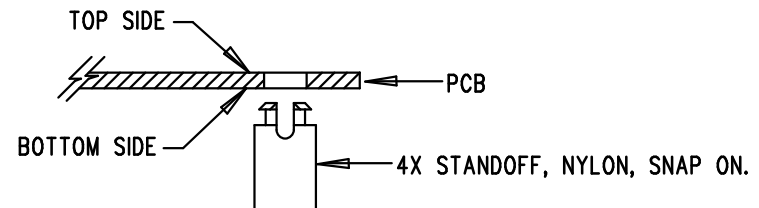


REVISION HISTORY				
ECO	REV	DESCRIPTION	APP. ENG.	DATE
-	2	PRODUCTION	PHILIP K..	10-04-12



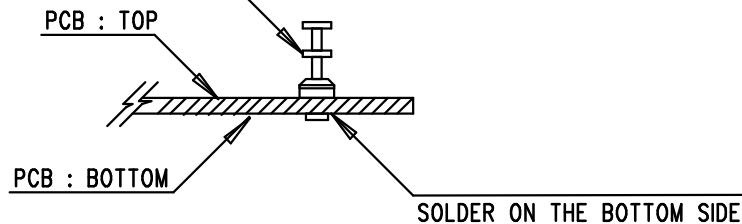
NOTES: UNLESS OTHERWISE SPECIFIED

1. WORKMANSHIP SHALL BE IN ACCORDANCE WITH IPC-A-610.
2. ASSEMBLY PROCESS SHALL INCLUDE: REFLOW SOLDER TOP SIDE SMD. MAXIMUM SOLDER TEMPERATURE IS 240 DEGREES CELSIUS.
3. PARTS TO OMIT WILL BE SPECIFIED ON THE BILL OF MATERIALS. LOCATIONS OF OMITTED PARTS SHALL BE FREE OF SOLDER. MASK THE SOLDER STENCIL WHERE SMT PARTS ARE OMITTED.
4. DEPANELIZE BOARDS AFTER ASSEMBLY AND ROUTE-OUT THE BREAKOUT TABS ON FOUR SIDES OF THE BOARD EDGE.
5. DO NOT APPLY ANY KIND OF ASSEMBLY STAMP OR QA STAMP TO ANY BOARD.
6. INSTALL 4 STANDOFFS AT 4 LOCATIONS AS SHOWN BELOW:



7. INSTALL 9 TURRETS AT LOCATIONS AS SHOWN BELOW:

TURRETS : 5-MILLMAX 2501-2-E1-E4,E8
4-MILLMAX 2308-2-E5,E6,E7,E9



APPROVALS

PCB DES.	AK
APP ENG.	PHILIP K.

LINEAR TECHNOLOGY

1630 MCCARTHY BLVD
MILPITAS, CA 95035
PH: (408)432-1900
www.linear.com
LTC CONFIDENTIAL-
FOR CUSTOMER USE ONLY

TITLE: TOP ASSEMBLY DRAWING

PRECISION WIRE DROP COMPENSATOR

SIZE	IC NO.	REV.
N/A	LT6110 DEMO CIRCUIT 2033A	2

SCALE = NONE

FILENAME: DC2033A-2.PCB

SHT 1 OF 1